

Customer :
Project Name :
Project No. :
Revision No. :

SPECIFICATION for INDUCTION MOTOR



0		For Bidding			
No.	DATE	DESCRIPTION	PREPARED BY	CHECKED BY	APPROVED BY

AC INDUCTION MOTOR DATA SHEET

Model No.or RFQ No.		Item No.		Rev. No. []			
Project Name		Project No.		Quantity sets			
GENERAL SPECIFICATION			PERFORMANCE DATA				
Frame Size	132S		Rated Output	3.7 kW 5.0 HP			
Type	HLP-3.7/6		Number of Poles	6			
Enclosure(Protection)	Totally Enclosed / IP55		Rotor Type	Squirrel Cage			
Method of Cooling	IC411(FC)		Starting Method*	<input checked="" type="checkbox"/> D.O.L <input type="checkbox"/> Y-Δ			
Rated Frequency	60 Hz		Rated Voltage	220 V			
Number of Phases	3		Current	Full Load	15.5 A		
Insulation Class	<input checked="" type="checkbox"/> F <input type="checkbox"/> B <input type="checkbox"/> H		Locked-rotor**	720 %			
Temp. Rise at full load (by resistance method)			Efficiency				
at 1.0 S.F 80 deg. C							
Motor Location	<input checked="" type="checkbox"/> Indoor <input type="checkbox"/> Outdoor						
Altitude	Less than 1000 meter		100% Load 89.5 %				
Relative Humidity	Less than 80 %		Power Factor(p.u)				
Ambient Temp.	40 deg. C (Max.)						
Duty Type	Continuous (S1)		100% Load 0.700				
Service Factor	1.15		Speed at Full Load 1170 r.p.m				
Mounting	B3		Torque				
Bearing	Type	Anti-Friction					
	DE/N-DE	6208ZZC3 / 6208ZZC3	Full Load	3.1 kg·m 30.2			
	Lubricant	Grease	Locked-rotor**	170 % 5.2 kg·m			
External Thrust	Not applicable		Breakdown**	220 % 6.8 kg·m			
Coupling Method	<input checked="" type="checkbox"/> Direct <input type="checkbox"/> V-Belt		Moment of Inertia (J)				
Shaft Extension	<input checked="" type="checkbox"/> Single <input type="checkbox"/> Double		Load(Max.) 7.700 kg·m ²				
Terminal	Main	<input checked="" type="checkbox"/> Aluminum <input type="checkbox"/> Cast Iron	Motor 0.052 kg·m ²				
Box	Aux.	<input type="checkbox"/> Yes <input type="checkbox"/> No	Sound Pressure Level (No-load & mean value at 1m from motor)				
	Location	Refer to Outline Drawing	57 dB(A)				
Application			Vibration 1.6 mm/sec (peak)				
Area classification	Non-Hazardous		Permissible number of consecutive starts				
Type of Ex-Protection	Not applicable		Cold 20 times				
Applicable Standard	KS, IEC, NEMA MG1 Part30(Vpeak)		Hot 15 times				
			Paint	Munsell No.	PHANTONE 279C		
ACCESSORIES			SUBMITTAL DRAWING				
			Outline Dimension Drawing \ Motor Weight(Approx.)				
			B3 LM-T0131B3PLV01 68 kg				
			REMARK				
			*. Premium efficiency(IE3) acc. to KS C 4202				
			*. SSEN Series				
			*. For use on PWM VFD 10:1VT,3:1CT@1.0S.F&F Temp.rise				
SPARE PARTS			<div style="border: 2px solid red; padding: 20px; text-align: center; font-size: 2em; color: red;">FOR BIDDING</div>				
			Date	DSND	CHKD	CHKD	APPD
			2021-04-26				

Note: Others not mentioned in this data sheet shall be in accordance with maker standard.

Above technical data are only design values and shall be guaranteed with tolerance of applicable standard.

Inspection and performance test shall be maker standard, if not mentioned.

* In case of Inverter-Fed Motor, performance data is based on sine wave tests.

** Data is based on when the motor is supplied at rated voltage & frequency. and the data is expressed as a percentage of full-load value.

Type : HLP-3.7/6

Full Load Torque : 3.1 kg.m

Load moment of Inertia (J) : - kg.m²

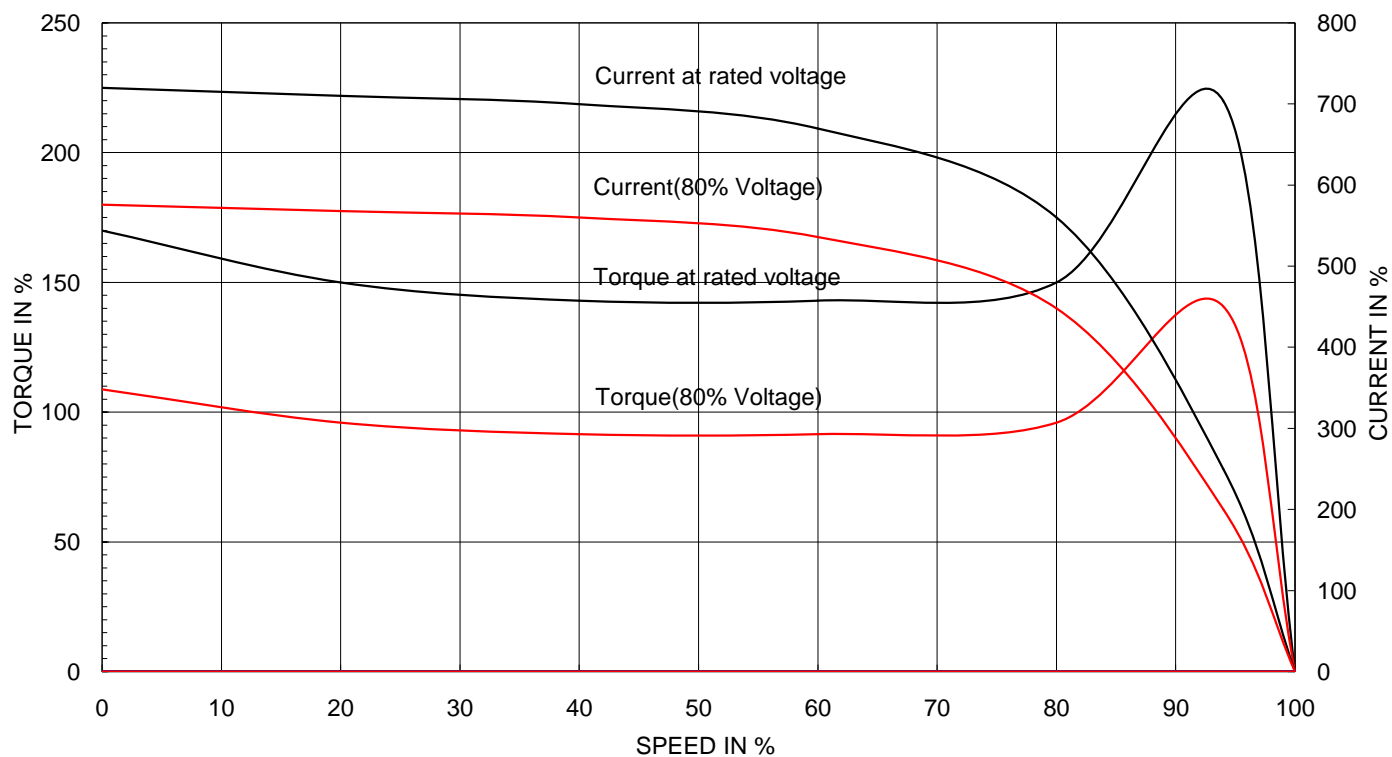
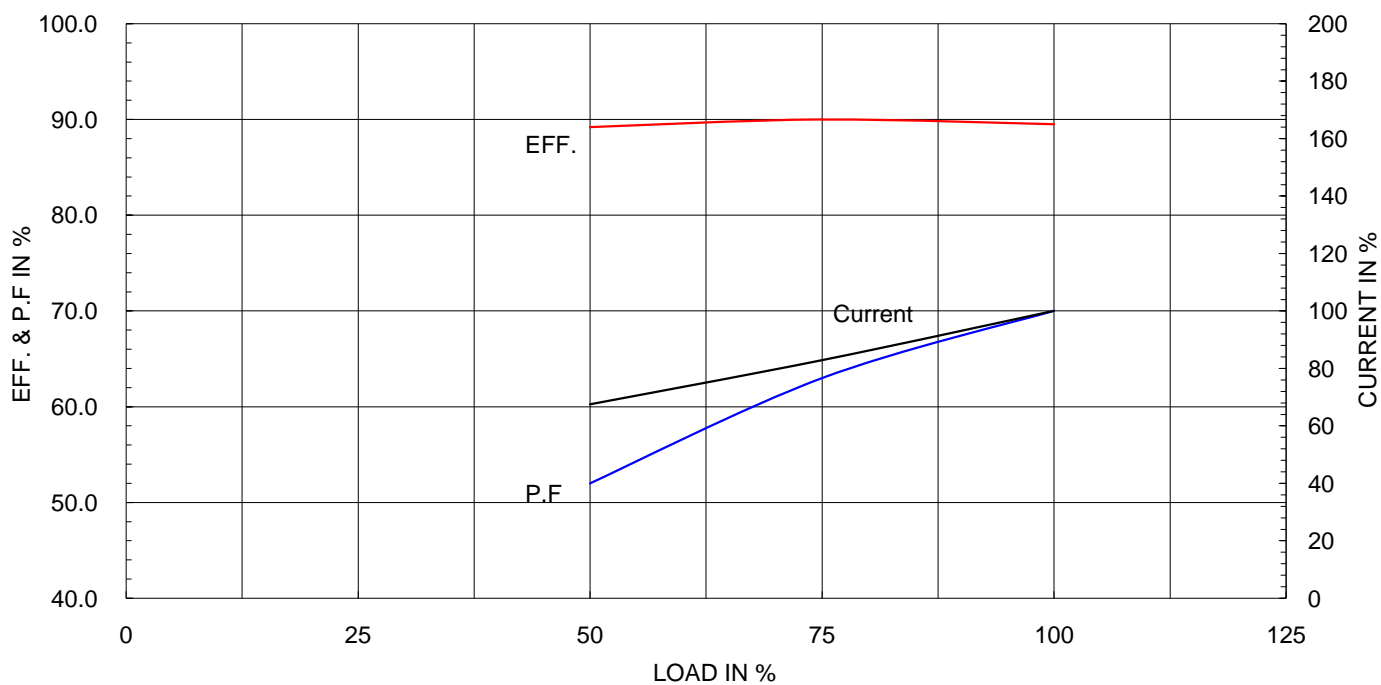
Motor moment of Inertia (J) : 0.052 kg.m²

3.7 kW 6 P 60 Hz

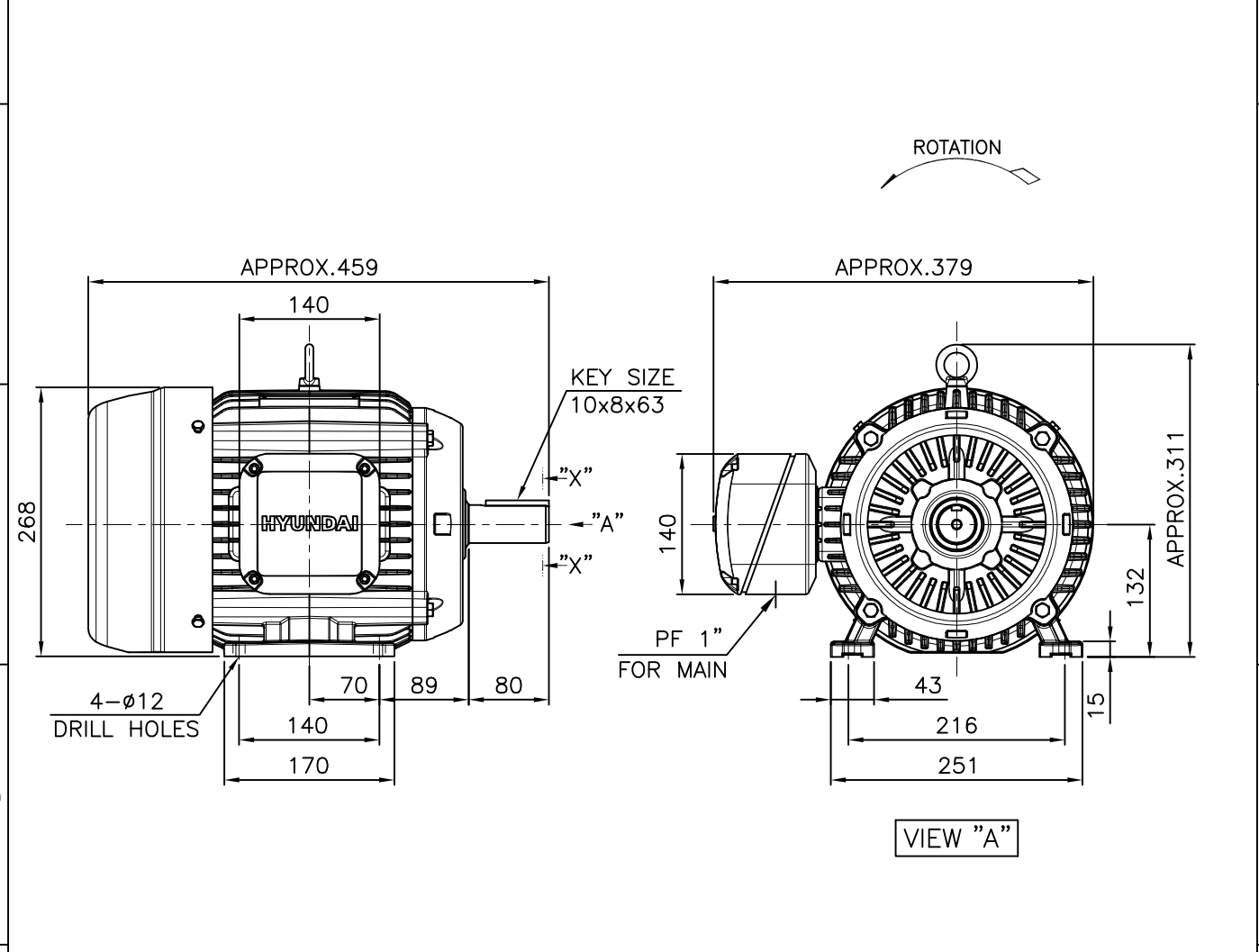
Speed at Full Load : 1170 RPM

Rated Voltage 220

Full Load Current 15.5A

SPEED VS TORQUE & CURRENT CURVE

OUTPUT VS EFF., P.F & CURRENT CURVE


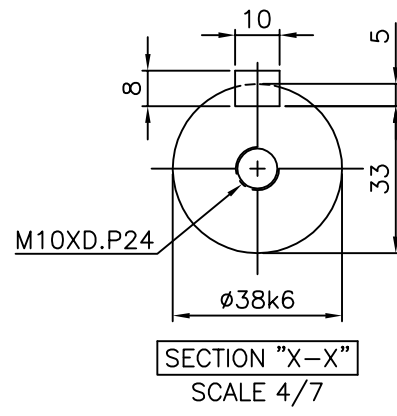
1	2	3	4
▽	50S	REV	DATE
▽▽	12.5S		
▽▽▽	3.2S		
▽▽▽▽	0.4S		



NOTE

1.TOLERANCE :

CENTER HEIGHT	132	$\begin{smallmatrix} 0 \\ -0.5 \end{smallmatrix}$
BASE HOLES	$\phi 12$	$\begin{smallmatrix} +0.43 \\ 0 \end{smallmatrix}$
SHAFT DIAMETER	$\phi 38$	$\begin{smallmatrix} +0.018 \\ +0.002 \end{smallmatrix}$
KEYWAY WIDTH	10	$\begin{smallmatrix} 0 \\ -0.036 \end{smallmatrix}$
KEYWAY DEPTH	5	$\begin{smallmatrix} +0.2 \\ 0 \end{smallmatrix}$
KEY WIDTH	10	$\begin{smallmatrix} 0 \\ -0.036 \end{smallmatrix}$
KEY HEIGHT	8	$\begin{smallmatrix} 0 \\ -0.090 \end{smallmatrix}$



APPD BY	S.K.HAN	UNIT	mm	SUBJECT	KS, IEC Fr.132S	DWG SIZE	A4 (1:7)
CHKD BY	S.Y.KIM	SCALE	1/7	TITLE	OUTLINE		
CHKD BY	I.K.KIM	PROJEC'N	3각법 (3rd Angle)				
DSND BY	S.H.LEE	DATE	2019.06.17				
HYUNDAI ELECTRIC				REF. NO		Sheet No.	of
				DWG NO	LM-T1131B3PLV01	Revision No.	0

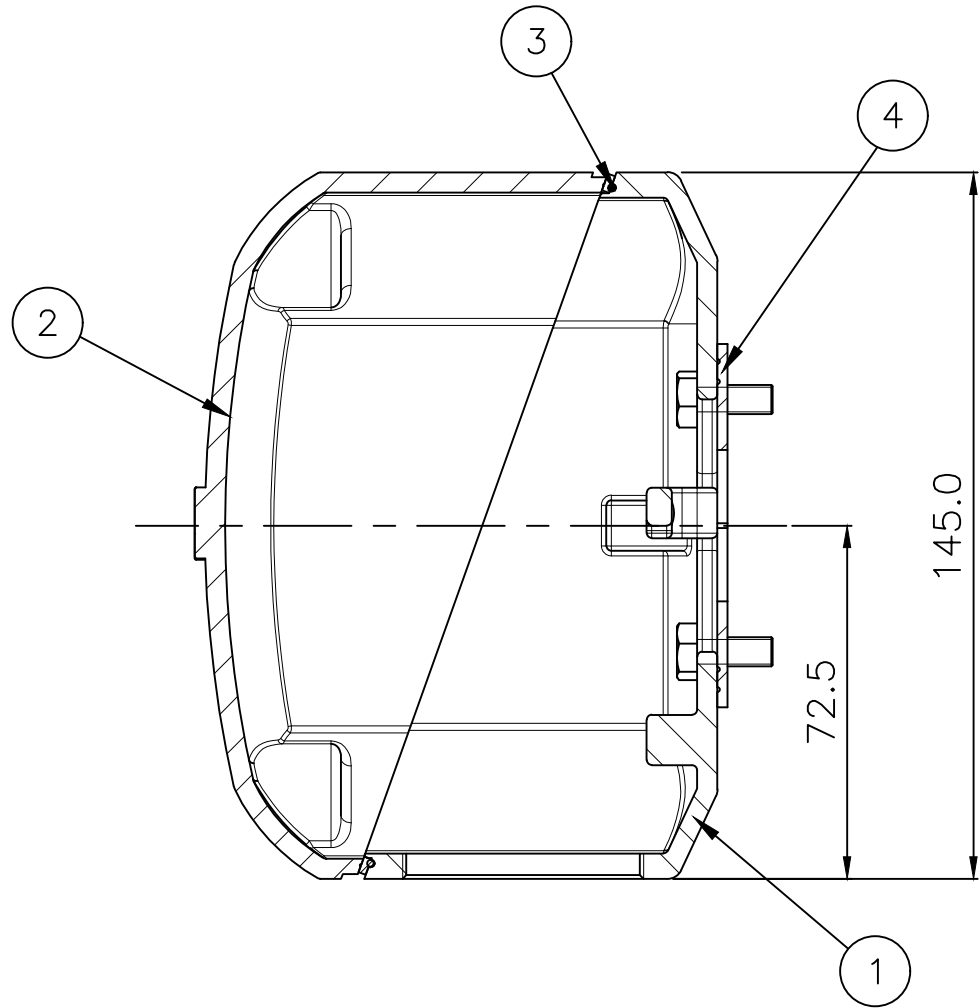
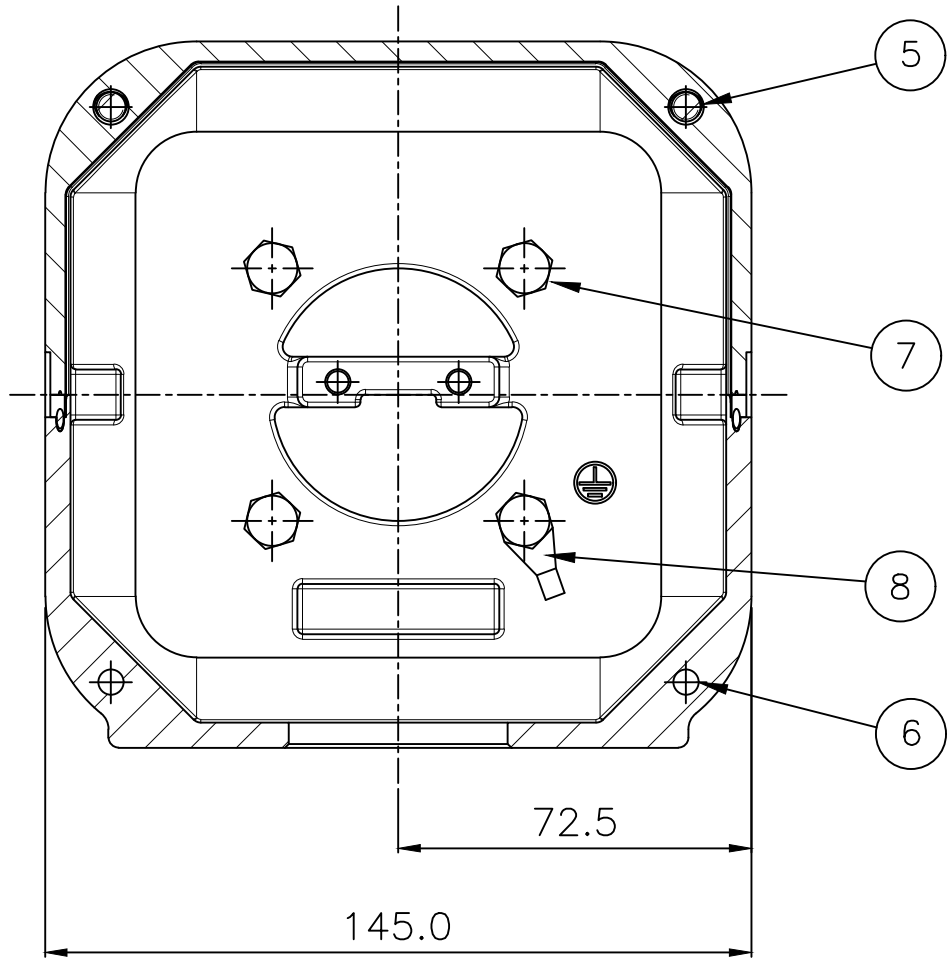
THIS DRAWING IS PROPRIETARY TO HYUNDAI ELECTRIC. NO PART OF THIS DRAWING
MAYBE REPRODUCED WITHOUT THE PERMISSION OF HYUNDAI ELECTRIC.


본 도면은 현대일렉트릭(주) 재산이므로
허가없이 복사할 수 없음 (취급유의)

HYUNDAI
ELECTRIC

▽	50S
▽▽	12.5S
▽▽▽	3.2S
▽▽▽▽	0.4S

REV	DATE	CONTENTS	REVD BY	CHKD BY	CHKD BY	APPD BY	일반가공공차				일반재관공차			
							1-4	±0.1	6-30	±0.5	4-18	±0.2	30-120	±0.8
							18-63	±0.3	120-315	±1.2	63-250	±0.5	315-1000	±2.0
							250-	±0.8	1000-	±3.0				



1	GROUND TERMINAL LUG	CU	--					8
4	BOX+FRAME HEX BOLT	S45C	M6 X L15					7
2	COVER+BOX HEX BOLT	S45C	M6 X L25					6
2	COVER+BOX HEX BOLT	S45C	M6 X L65					5
1	BOX GASKET	NBR	--					4
1	COVER GASKET	NBR	--					3
1	CONDUIT BOX COVER	AL	--					2
1	CONDUIT BOX	AL	--					1
Q'TY	DESCRIPTION	MATERIAL	DIMENSION	WEIGHT	PART NO.	REMARK	NO.	
APPD BY	S.K.HAN	UNIT	mm	SUBJECT	SSEN SERIES 100-132FR			DWG SIZE A3 (1:1.5)
CHKD BY	I.K.KIM	SCALE	1/1.5	TITLE TERMINAL BOX ASS'Y				
CHKD BY	-	PROJEC'N	3rd Angle					
DSND BY	이승호	DATE	2020-06-19					
				REF. NO		Sheet No. of		
				DWG NO	3M-234756	Revision No. 0		